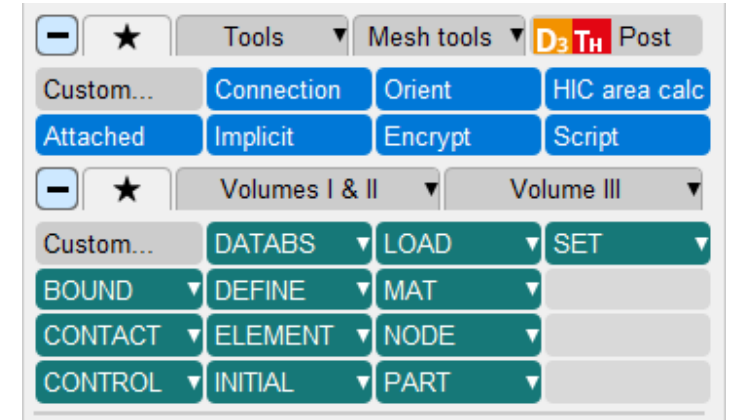


Favourite Tools & Keywords



About

- PRIMER has a large number of specialised Tools as well as supporting the vast majority of LS-DYNA keywords.
- Favourite Tools and Keywords menus allow users to select a subset of Tools or Keywords to fill their own tab.
- This makes it easier to find the features that you use regularly, as well as giving more space for docked menus.
- Buttons in the Favourites tabs are used in exactly the same way as their counterparts in the main Tools and Keywords tabs.



Customising Your Favourites Menu



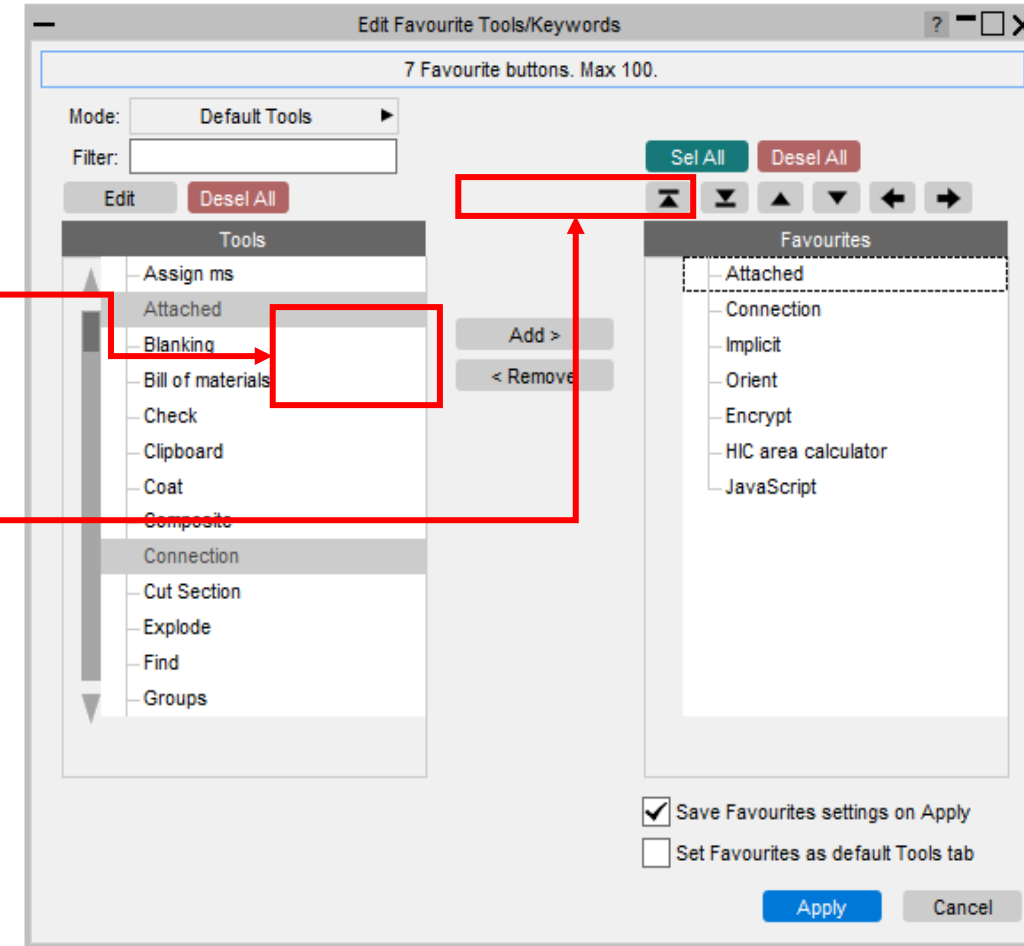
Customising Your Favourites Menu

- Each Favourites menu is denoted by the “star” tabs in the Tools and Keywords panels.
- To edit which features will appear in your Favourites menu and the order they appear in, click the “Custom...” button. This will launch the Edit Favourite Tools/Keywords panel.

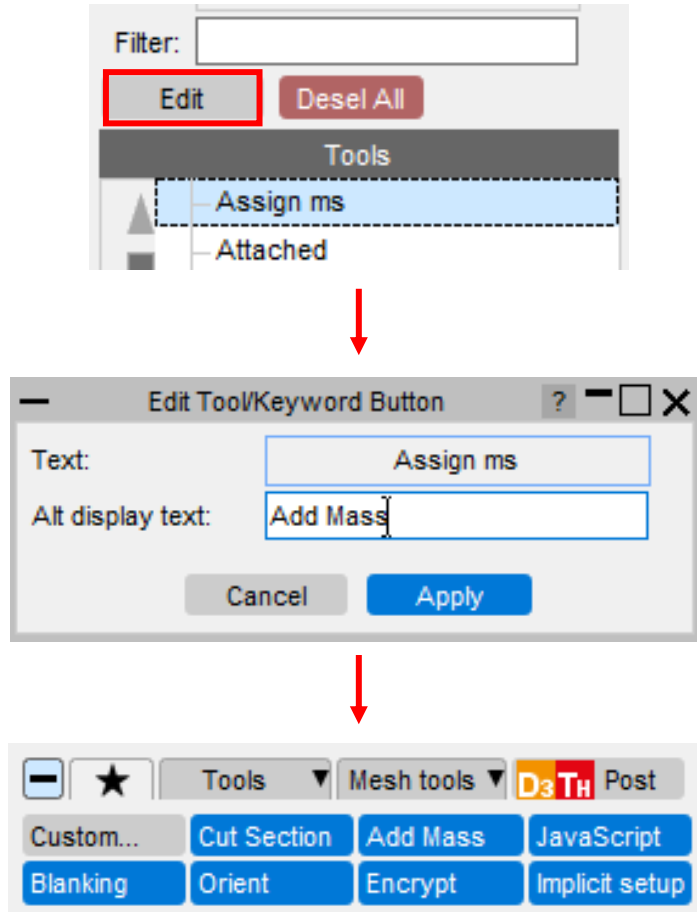


Customising Your Favourites Menu

- All available Tools or Keywords are listed on the left and the currently selected Favourites are listed on the right.
- To add Tools or Keywords, select them from the list on the left and press “Add”.
- To remove them, select them from the list on the right and press “Remove”.
- Buttons at the top of the Favourites list can be used to sort the items into the desired order.



Customising Your Favourites Menu



- You can define your own names for standard PRIMER Tools and Keywords buttons and add them to your Favourites to make them easier to find or consistent with other familiar software.
- The default button name will still be displayed as hover text on the button.



Customising Your Favourites Menu



Mode: Custom Tools (JavaScript) ▶



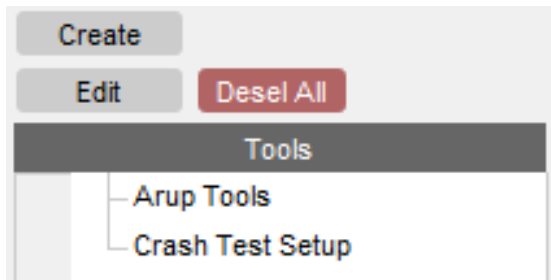
— Edit Custom Tool ? - □ X

Text: Crash Test Setup

File: 20.0_x64\scripts\crash_test_setup.js

Hover text: Crash Test Setup JavaScript

Cancel Apply

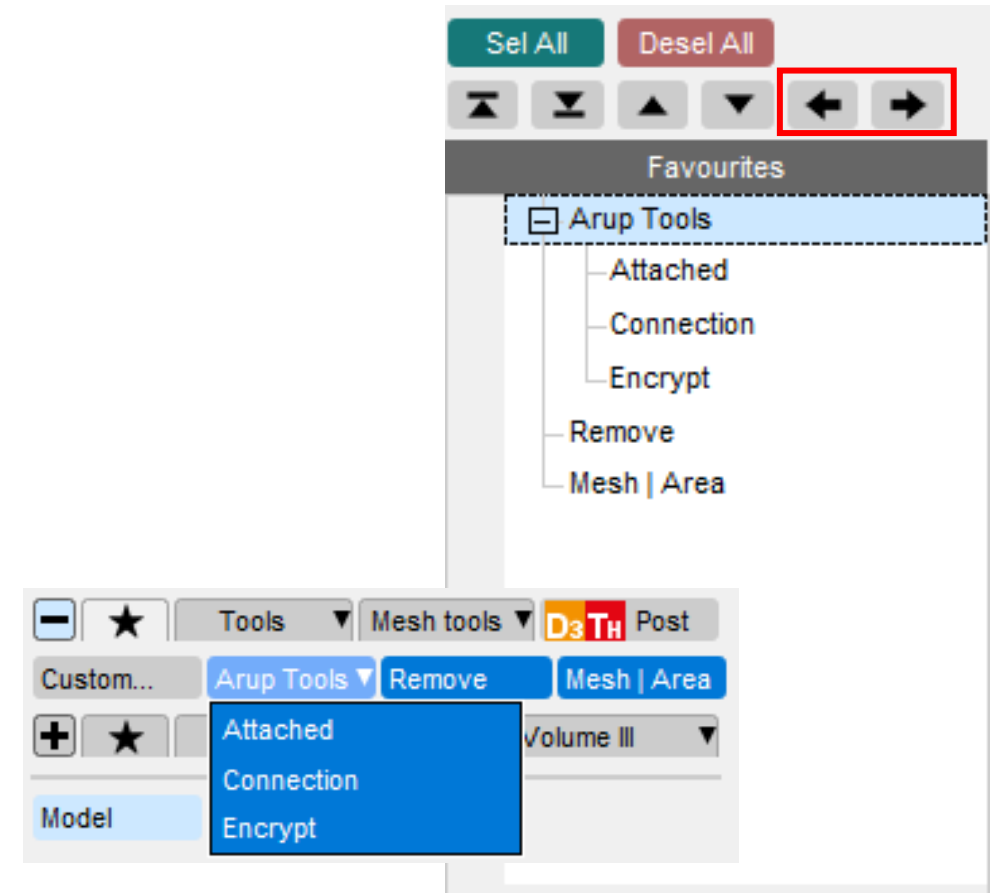


- Custom JavaScript Tools (created using the PRIMER JavaScript API) can also be added to your Favourite Tools for easy access.
- Switch to Custom Tools (JavaScript) mode and add a Tool by defining button text, a JavaScript file, and optional hover text, then add it to your Favourites like any other Tool.



Customising Your Favourites Menu

- Custom Tools mode can also be used to create popup buttons for your Favourite Tools. This allows you to group related Tools together to make them easier to find.
- Select the Tools you want to add to the popup and press the → button to make them children.
- Use the ← button to move Tools back to the top level again.



Customising Your Favourites Menu

- You can ensure the contents and layout of each Favourites menu are saved for future sessions by checking this box before pressing “Apply”.
- You can also set your Favourites menu as the default tab to be open when you next launch PRIMER.
- With these options saved, you can quickly and easily recreate your desired setup, whatever device you’re working on, by copying your oa.conf and oa_pref files.
- Alternatively, you can press “Cancel” to close the panel without saving any changes.



☒ Save Favourites settings on Apply

☐ Set Favourites as default Tools tab

Apply Cancel

Current Limitations



Current Limitations

- The Favourite Tools menu can contain any button from the core Tools tab, apart from the buttons “Other”, “Safety”, “FMH” and “Pedestrian”. However, sub-tools from these buttons can be added (e.g. the HIC Area Calculator and Dummy Finger Positioning tools).
- Popup buttons on the Favourite Tools menu can only be one level deep – popups within popups are not currently supported.



Contact us

Global / UK

T: +44 121 213 3399

E: dyna.support@arup.com

India

T: +91 40 69019723 / 98

E: india.support@arup.com

China

T: +86 21 3118 8875

E: china.support@arup.com

USA

T: +1 415 940 0959

E: us.support@arup.com

Subscribe to
our newsletter:



Follow us on:



@Oasys LS-DYNA
Environment



@Oasys LS-DYNA
Environment



@Oasys



@Oasys

<https://www.oasys-software.com/dyna/>