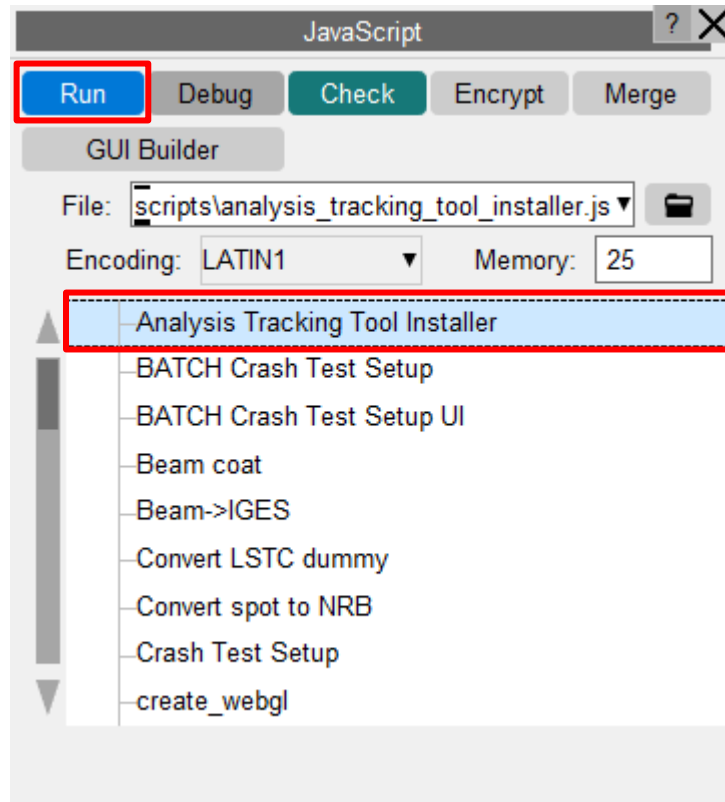


Analysis Tracking Tool



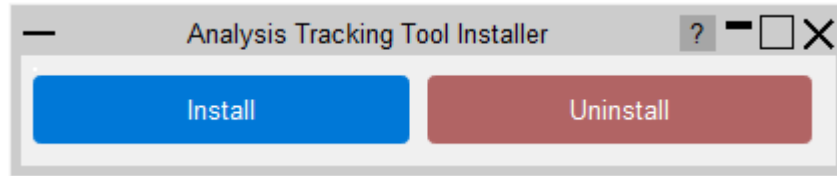
Installation

- The tool can be installed or uninstalled by running the *Analysis Tracking Tool Installer* script from the JavaScript menu.



Installation

- Simply click 'Install' or 'Uninstall' to activate or deactivate the tool respectively.



- The installation process works by creating a folder *primer_library/scripts/hooks* in your home area (OA_HOME) and putting a keyout hook script in that folder named *write_hook.js*.
- Once installed, when you write a file from PRIMER, the Analysis Tracking Tool will be triggered.
- The uninstallation process works by removing the script *write_hook.js*.
- If you have an old version of the analysis tracking tool or an existing *write_hook.js* script, the installer will prompt you to confirm that you would like to replace it.



Input Data: Analysis / Includes Register

- You need to provide the path to the analysis or includes register spreadsheet which you would like to add your model to.
- You can:
 - Choose from recently used register.
 - Input the path to a register in the analysis register textbox.
 - Select an existing register spreadsheet via windows explorer.
 - Create a new register from a template.

Analysis Tracker

Commit Skip (write only) Cancel Include File

Waiting for a description of the changes to be added.

Analysis Register: C:\ACCORD_PEDHEAD\Ped_Analysis_Register.xlsx

Worksheet: PEDHEAD

Path to write to: C:\ACCORD_PEDHEAD\002\Accord_Pedhead.key

Based on: C:\ACCORD_PEDHEAD\001\Accord_Pedhead.key

Tags: Select a tag

Description of changes:

+ Additional message line...

Create Refresh Create tag

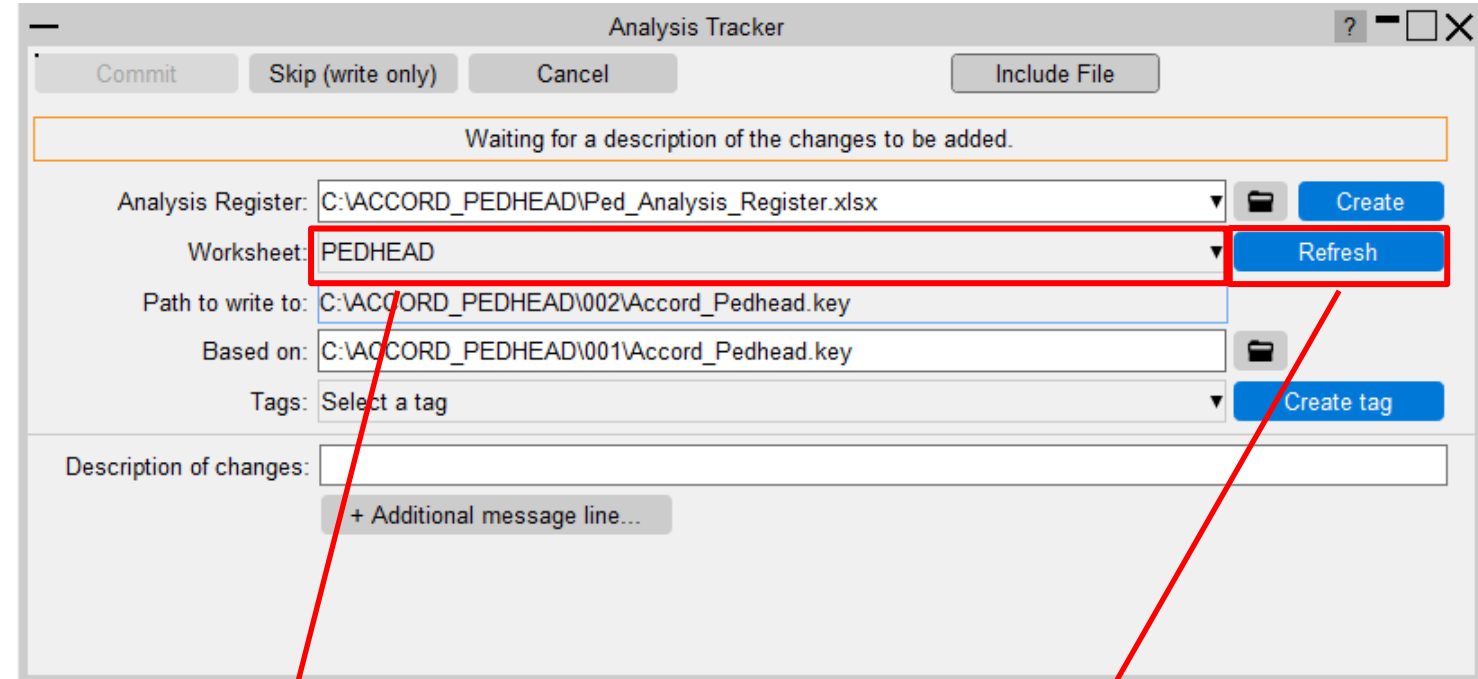
Right click to select from recently used registers (most recent will be automatically selected).

Select an existing register spreadsheet via windows explorer.

Create new analysis register with the correct template.

Input Data: Worksheet

- You can add worksheets to your register spreadsheet, for example for different loadcases.
- Right click to select the worksheet to write to in the analysis register spreadsheet.
- Use refresh to check for existing worksheets in the spreadsheet and update the worksheet options.



Analysis Tracker

Commit Skip (write only) Cancel Include File

Waiting for a description of the changes to be added.

Analysis Register: C:\ACCORD_PEDHEAD\Ped_Analysis_Register.xlsx Create

Worksheet: PEDHEAD Refresh

Path to write to: C:\ACCORD_PEDHEAD\002\Accord_Pedhead.key

Based on: C:\ACCORD_PEDHEAD\001\Accord_Pedhead.key

Tags: Select a tag Create tag

Description of changes:

+ Additional message line...

Right click to select which worksheet on the spreadsheet you would like to add the data to.

Refresh tabs. PRIMER will open the register spreadsheet, check which worksheets are present, and update the options.



Input Data: Path to write to and Based on Path

- The 'path to write to' and 'based on' fields are automatically populated by the tool.

Analysis Tracker

Commit Skip (write only) Cancel Include File

Waiting for a description of the changes to be added.

Analysis Register: C:\VACCORD_PEDHEAD\Ped_Analysis_Register.xlsx Create

Worksheet: PEDHEAD Refresh

Path to write to: C:\VACCORD_PEDHEAD\002\Accord_Pedhead.key

Based on: C:\VACCORD_PEDHEAD\001\Accord_Pedhead.key

Tags: Select a tag Create tag

Description of changes:

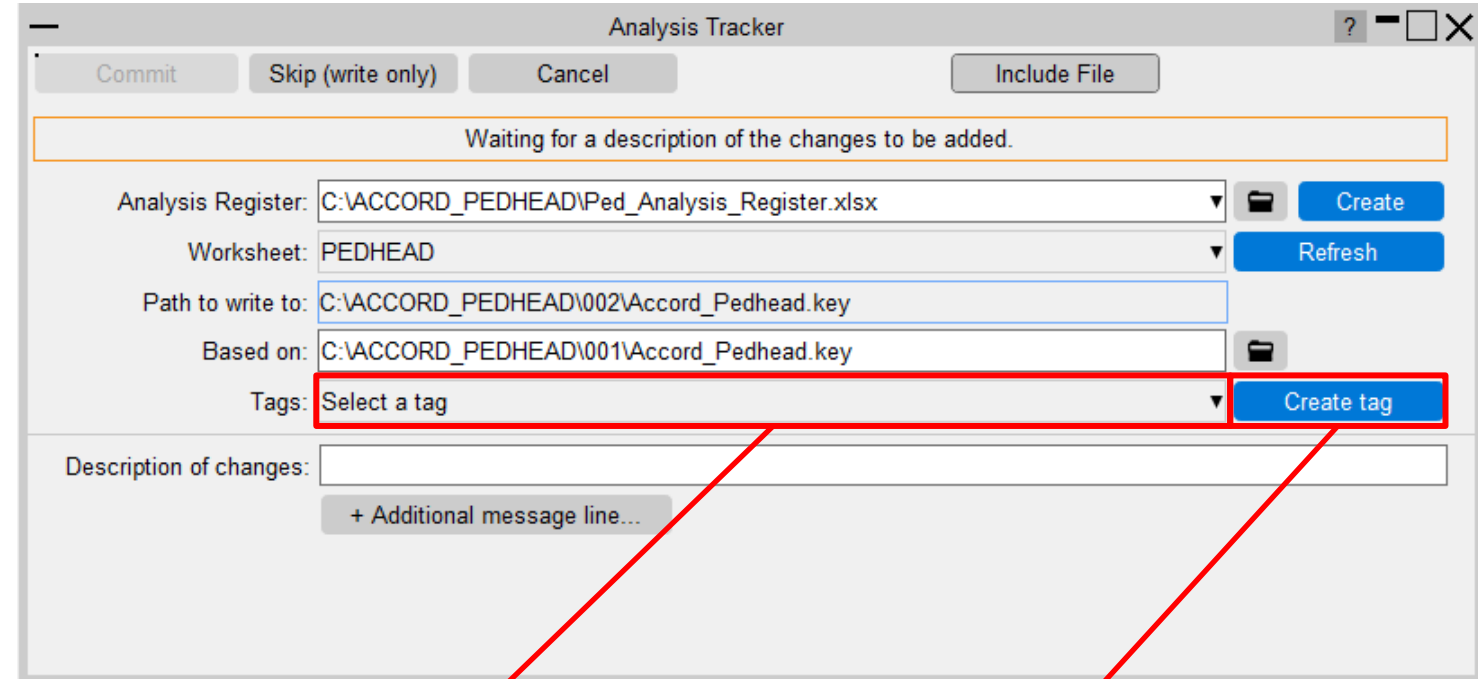
+ Additional message line...

The path to write to is the path you were writing your model to when the analysis tracking tool was triggered.

The 'based on' path is the current path of the model which you are writing from PRIMER. You can change this by manually changing the path in the textbox or navigating to the model which you would like to use instead via file explorer.

Input Data: Tags

- You can optionally tag the changes that you've made. This could make it easier to search and filter through your register later.
- The tags are stored in *.analysis_management_tags* text file in your home area.
- To have the same tags available to all users, you can create an *.analysis_management_tags* text file in the OA_ADMIN directory.



Analysis Tracker

Commit Skip (write only) Cancel Include File

Waiting for a description of the changes to be added.

Analysis Register: C:\ACCORD_PEDHEAD\Ped_Analysis_Register.xlsx Create

Worksheet: PEDHEAD Refresh

Path to write to: C:\ACCORD_PEDHEAD\002\Accord_Pedhead.key

Based on: C:\ACCORD_PEDHEAD\001\Accord_Pedhead.key

Tags: Select a tag Create tag

Description of changes:

+ Additional message line...

Select a tag by right clicking.

You can also create your own tags, which will be available every time you use the tool.

Input Data: Description of Changes

- Before you can add your data to the register spreadsheet, you must fill in the description of changes text box.
- You can also use the additional message line to put in a longer descriptions if required or for formatting the spreadsheet.

Analysis Tracker

Commit Skip (write only) Cancel Include File

Ready to go.

Analysis Register: C:\ACCORD_PEDHEAD\Ped_Analysis_Register.xlsx Create

Worksheet: PEDHEAD Refresh

Path to write to: C:\ACCORD_PEDHEAD\002\Accord_Pedhead.key

Based on: C:\ACCORD_PEDHEAD\001\Accord_Pedhead.key

Tags: Select a tag Create tag

Description of changes: Updated bonnet material

+ Additional message line...

Describe what changes have been made and why.

Add additional line for longer descriptions or formatting reasons in your spreadsheet.



Commit

- The tool requires you to input a valid register and a description of the changes you are making.
- Once these fields are complete, the commit button activates.
- When you press commit, the tool will first add the information about the model to the register and then write out the model in the usual way.
- If the tool fails to add the data to the register for some reason, your model will still be written.

Analysis Tracker

Commit Skip (write only) Cancel Include File

Ready to go.

Analysis Register: C:\ACCORD_PEDHEAD\Ped_Analysis_Register.xlsx Create

Worksheet: PEDHEAD Refresh

Path to write to: C:\ACCORD_PEDHEAD\002\Accord_Pedhead.key

Based on: C:\ACCORD_PEDHEAD\001\Accord_Pedhead.key

Tags: Select a tag Create tag

Description of changes: Updated bonnet material

+ Additional message line...

Adds the model
information to the analysis
register spreadsheet and
writes out the model.

Skip, Cancel and Include File Toggle

- You can press Skip to just write out the model in the usual way and not add the model to the register.
- Cancel will cancel the keyout operation altogether and the model will not be added to the register.
- The tool will detect if the file you are writing is a master file or include file, but you can overwrite this by using the include file toggle button.

The screenshot shows the 'Analysis Tracker' dialog box. At the top, there are four buttons: 'Commit' (blue), 'Skip (write only)' (grey, highlighted with a red box), 'Cancel' (grey, highlighted with a red box), and 'Include File' (grey, highlighted with a red box). Below these buttons is a status bar that says 'Ready to go.' The main area contains several fields: 'Analysis Register:' with a dropdown menu showing 'C:\ACCORD_PEDHEAD\Ped_Analysis_Register.xlsx' and a 'Create' button; 'Worksheet:' with a dropdown menu showing 'PEDHEAD' and a 'Refresh' button; 'Path to write to:' with a text field showing 'C:\ACCORD_PEDHEAD\002\Accord_Pedhead.key'; 'Based on:' with a text field showing 'C:\ACCORD_PEDHEAD\001\Accord_Pedhead.key' and a folder icon; 'Tags:' with a dropdown menu showing 'Select a tag' and a 'Create tag' button. At the bottom, there is a 'Description of changes:' text area with 'Updated bonnet material' and a '+ Additional message line...' button. Three red lines originate from the highlighted buttons: one from 'Skip (write only)' pointing to the text 'Writes the model in usual way without adding any information to the register.', one from 'Cancel' pointing to 'Cancels the keyout operation.', and one from 'Include File' pointing to 'Change if the tool thinks your file is a master file or include file.'

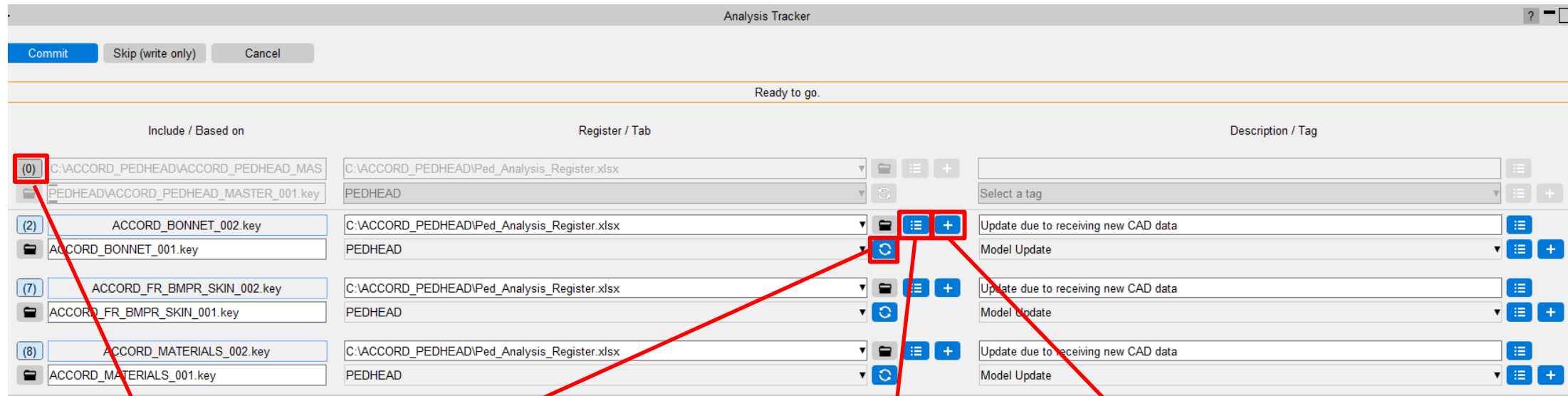
Writes the model in usual way without adding any information to the register.

Cancels the keyout operation.

Change if the tool thinks your file is a master file or include file.

Handling Multiple Include Files

- When writing out changes in multiple include files, you can handle the information for the master file and each include file individually.
- You can also toggle the files in this panel to decide whether to write the information in the register or not.



Toggle the files on to write the information in the register before writing out.

Refresh tabs.

Propagate the tab information for all the file rows.

Create new register.

Register Format

- The templates for analysis registers and includes tracking registers are different.
- For more information on these templates check:
`OA_INSTALL/primer_library/scripts/analysis_tracker_includes/analysis_tracker_tool_includes`
- The register can be saved to and accessed from OneDrive directly.
- A preference in PRIMER named “analysis_tracking_tool_dir_level” can be used to set which directory level is written to the analysis register by the Analysis Tracking Tool.



Register Format (cont.)

- The preference takes integer values where '0' is the keyword file directory, '1' is its parent directory, '2' is its grandparent directory, etc.
- Note there is a different template for master analysis models and include files and you will need to select the appropriate one for the type of file which you are writing.
- There are some limitations on the spreadsheet format. See `OA_INSTALL/primer_library/scripts/analysis_tracker_includes/analysis_tracker_tool_includes`.



Contact us

Global / UK

T: +44 121 213 3399

E: dyna.support@arup.com

India

T: +91 40 69019723 / 98

E: india.support@arup.com

China

T: +86 21 3118 8875

E: china.support@arup.com

USA

T: +1 415 940 0959

E: us.support@arup.com

Subscribe to
our newsletter:



Follow us on:



@Oasys LS-DYNA
Environment



@Oasys LS-DYNA
Environment



@Oasys



@Oasys

<https://www.oasys-software.com/dyna/>